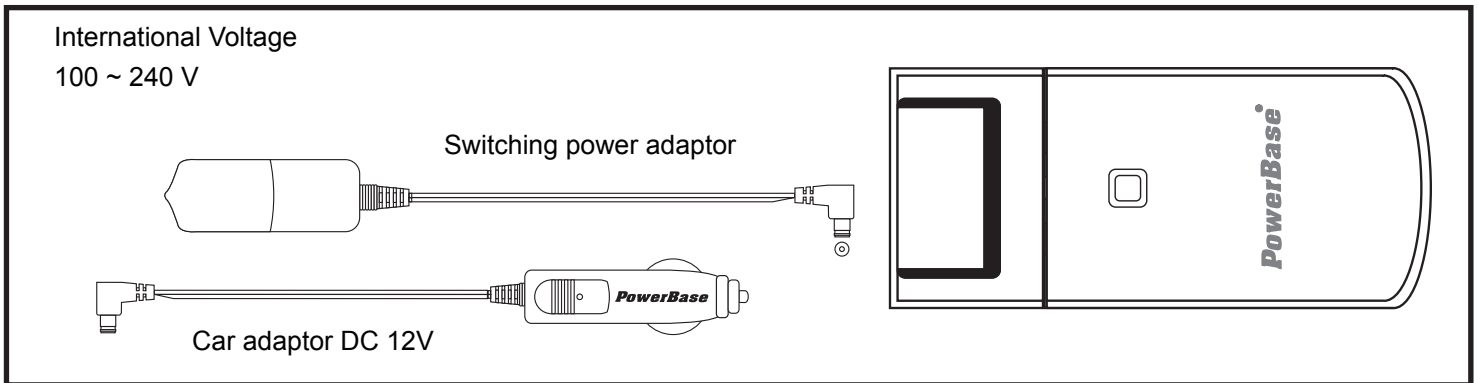


USER MANUAL

Congratulations on your purchase of the outstanding USB Universal 3.6V/7.2V Li-ion & NiMH AA, AAA, 9V Battery Charger C-736U. This manual will help you understand how to operate this Charger and Batteries properly.

FEATURES OF C-736U Li-ion & NiMH BATTERY CHARGER

- Compatible with most 3.6V - 3.7V or 7.2V - 7.4V Li-ion Batteries, like digital camera, mobile phone etc
- Either 2AA/AAA or 1 X 9V size NiMH batteries can be charged
- USB output power to iPhone, iPod series & mobile phone etc with AC adaptor connection.
- Auto voltage switching 100-240V
- Automatically +/- polarity detection
- Easy adjustable slide contact
- Auto cut off device & Timer protection
- Auto identify 3.6V/7.2V Li-ion and NiMH Batteries
- LCD automatically displays battery type, voltage and charging status
- Adopt non-continuous pulse charging current to avoid memory effect. It enhances the charging efficiency and reduce the temperature of the batteries. The batteries will have better performance and longer cycle life
- Can be used in indoor by switching power adaptor or outdoor by car adaptor DC 12V



CAUTION

- Do not charge abnormal Li-ion battery (battery voltage below 2.8V).
- Charging abnormal Li-ion battery will damage the charger and even cause an un-safety problem of this action.

1. Do not charge Ni-MH & Ni-Cd rechargeable batteries at the same time.
2. This product is designed for Li-ion rechargeable batteries and NiMH batteries only. To avoid personal injury and damage, do not charge any primary alkaline, zinc chloride, or zinc carbon type batteries.
3. Do not expose the charger to rain or moisture.
4. Do not operate the charger using an extension cord.
5. Do not use the charger if it has received a sharp blow, been dropped, or damaged in anyhow.
6. To reduce risk of shock, disconnect the power adaptor from outlet before attempting any cleaning of the charger.
7. Do not charge a leaking, corroded or dead battery.
8. Do not attempt to repair charger by yourself. When service or repair is required, contact qualified service personnel.
9. Do not try to disassemble the charger.
10. Always disconnect the charger from the mains when not in use.
11. Store the charger in a cool and dry place when not in use. Keep away from children.

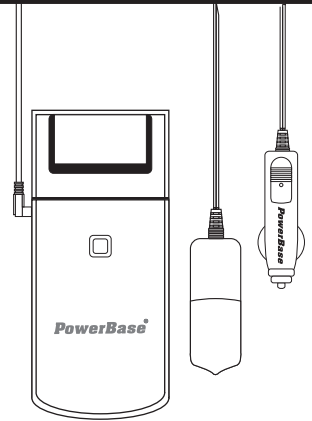
PLEASE NOTE:

*PowerBase Industrial (HK) Ltd. will not be responsible for any personal loss and/or injury if the defect was caused by misuse or mishandling by the user in any way.

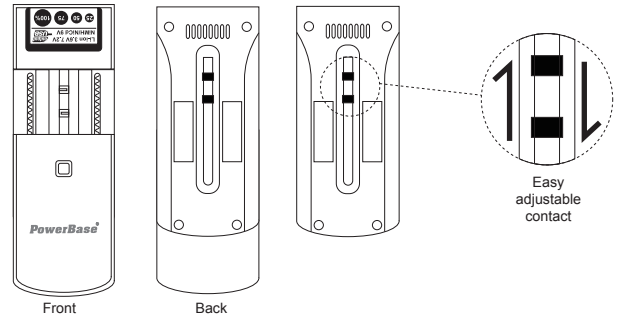
1. This charger do not compatible to all InfoLithium Series Rechargeable Battery Pack as well as SONY NP-FR1, NP-FC10 / CANON LP-E6 etc.
2. The dimensions of the Li-ion batteries have the limitation as follows:
 - The width of the Li-ion battery cannot be in excess of 4cm.
 - The distance between 2 pins of the Li-ion battery must be more than 3mm.

CHARGER OPERATION

1.) Connect the power supply by switching power adaptor or car adaptor. The Blue LCD will be light up which indicates "POWER" in standby stage.



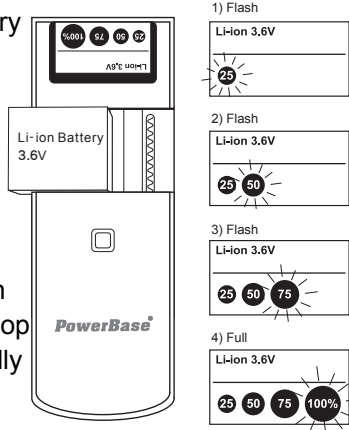
2.) Easy adjustable contact and automatically +/- detection



Adjust 2 pins to the connect position (Battery)
Place the battery on the charger.

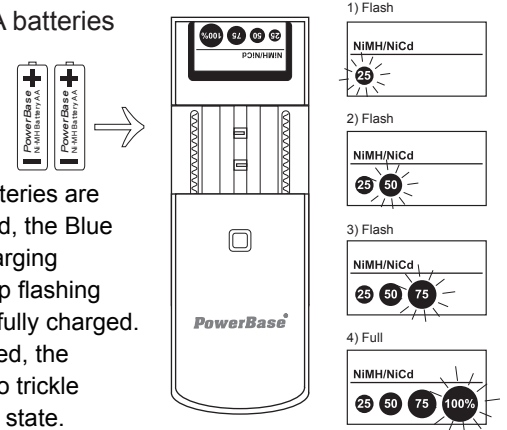
3.) 3.6V / 7.2V Li-ion battery

Adjust the charger case to fit on 3.6V / 7.2V Li-ion battery, the Blue LCD flash in charging process and stop flashing when battery is fully charged.



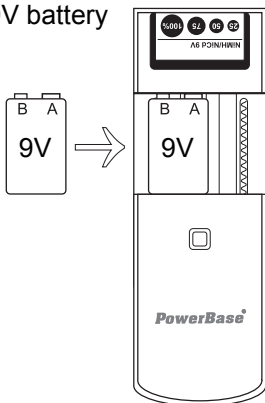
4.) 2AA or AAA batteries

When 1 or 2 batteries are correctly inserted, the Blue LCD flash in charging process and stop flashing when battery is fully charged. After fully charged, the charger will go to trickle charge maintain state.



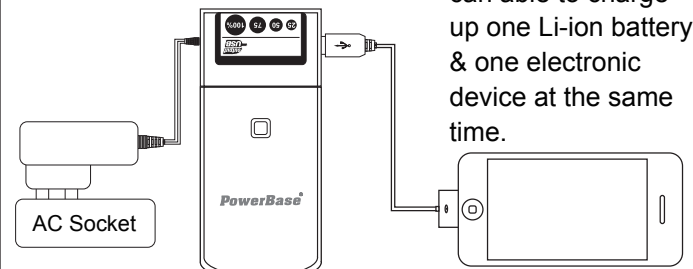
5.) 9V battery

When 1 x 9V battery are correctly inserted, the Blue LCD flash in charging process and stop flashing when battery is fully charged. After fully charged, the charger will go to trickle charge maintain state.



6.) USB output power to iPhone, iPod series & mobile phone etc with AC adaptor connection.

Remark : C-736U can able to charge up one Li-ion battery & one electronic device at the same time.



SPECIFICATION

Input Voltage	Switching Power Adaptor AC 100~240V, 50~60Hz (UL, VDE, BS, SAA plugs)
Charge Capability	Li-ion Rechargeable Battery : 3.6V - 3.7V (DC 4.2V : 700mA) 7.2V - 7.4V (DC 8.4V : 700mA) NiMH Battery : 2xAA 2.8V , 2xAAA 2.8V (DC 2.8V : 700mA) 9V Battery (80mA) USB output : 5V (500mA)
Car Adaptor	12V / DC, 2A fuse, (Optional Accessory)
Termination Method	Li-ion Rechargeable Battery : Auto Voltage Monitor NiMH Battery : Minus Delta (-ΔV)